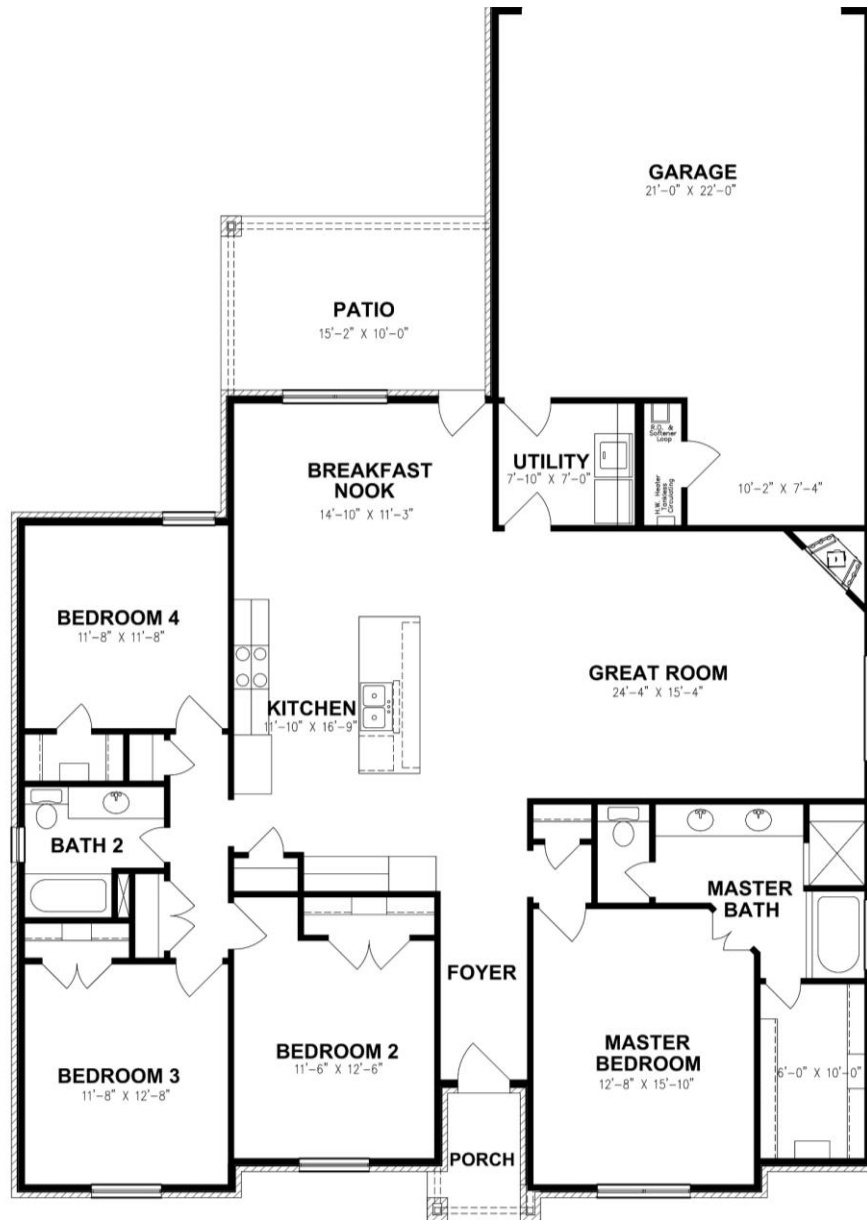




Mark Payne

SMART DESIGN • BUILT FOR LIFE

Homes



4505 Heritage Oaks
2,057 SQ. FT.

The Essex

Estimated Price: \$458,500



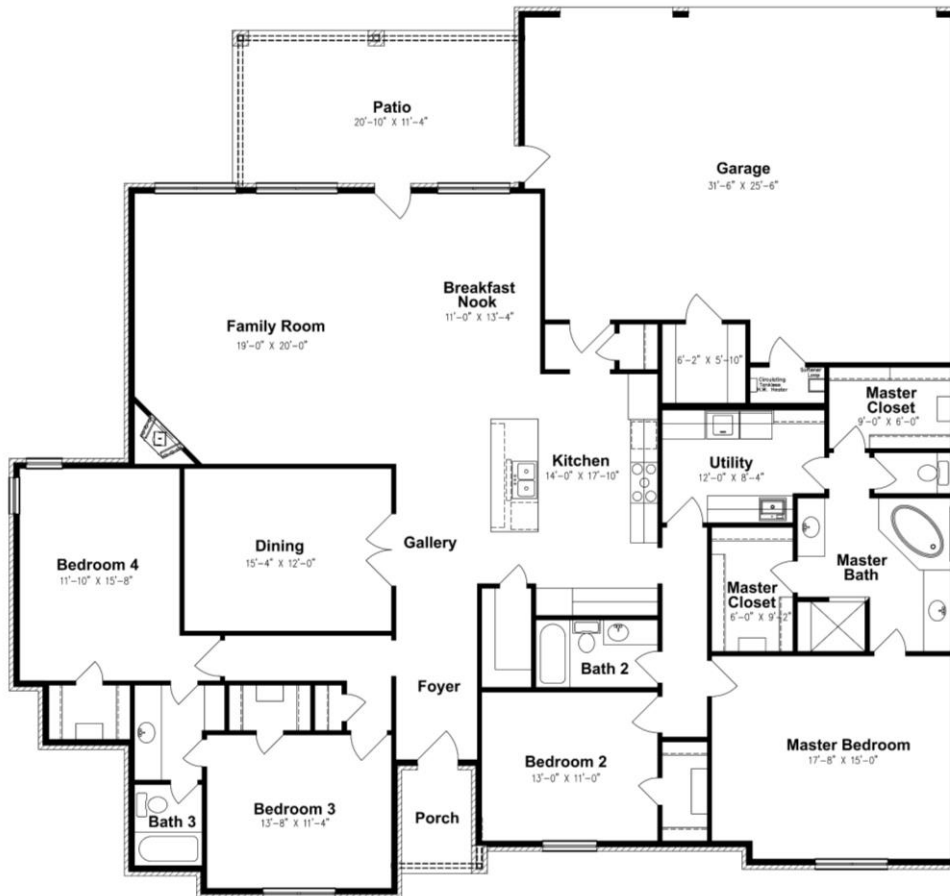
Mark Payne
Homes
SMART DESIGN • BUILT FOR LIFE



4503 Heritage Oaks Dr.
2,367 SQ. FT.
The Whittenburg
Estimated Price: \$485,500



6109 Little River Ct.
 2,860 SQ. FT.
 The Nottingham
 Estimated Price: \$582,500



4506 Bosque Dr.
 2,860 SQ. FT.
 The Nottingham
 Estimated Price: \$569,500



Mark Payne
Homes
SMART DESIGN • BUILT FOR LIFE



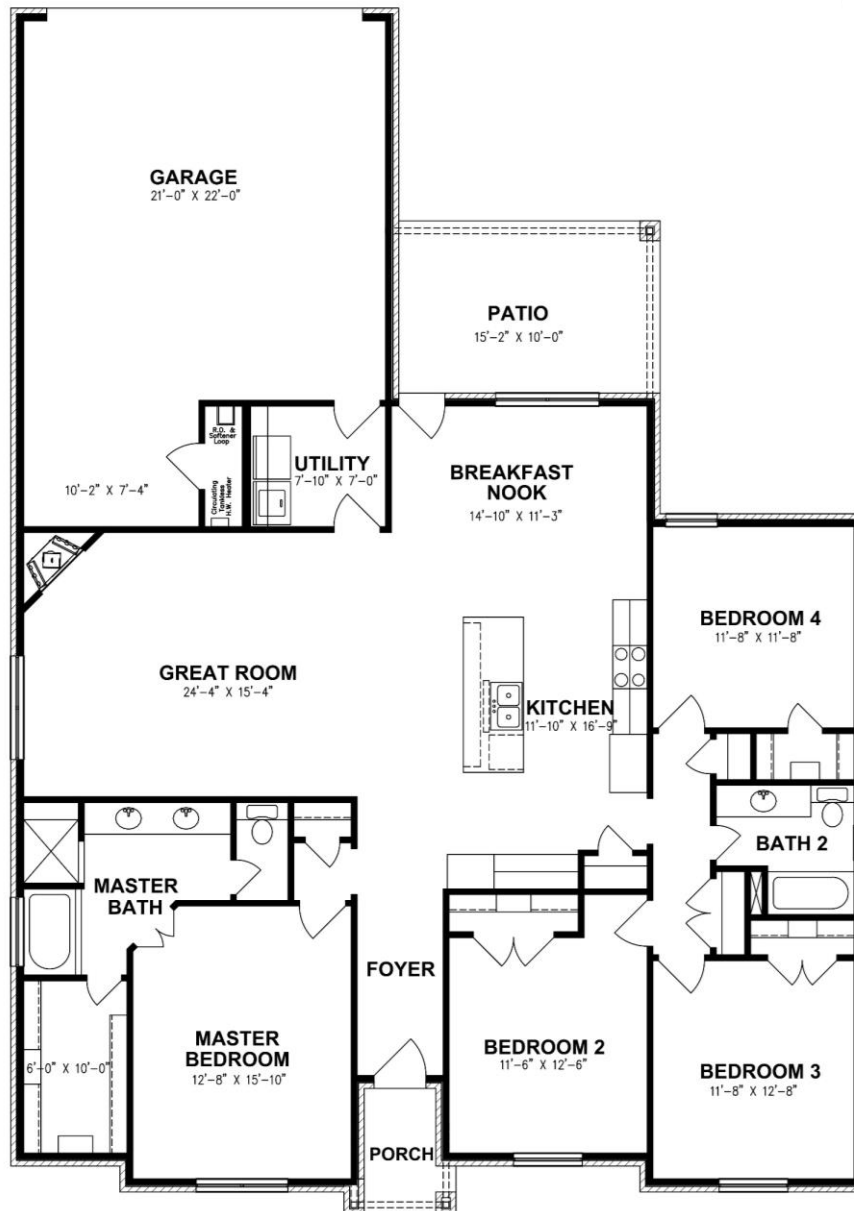
4410 Heritage Oaks
2,011 SQ. FT.
The Devonwood
Estimated Price: \$443,500



Mark Payne

SMART DESIGN • BUILT FOR LIFE

Homes



4500 Heritage Oaks

2,057 SQ. FT.

The Essex

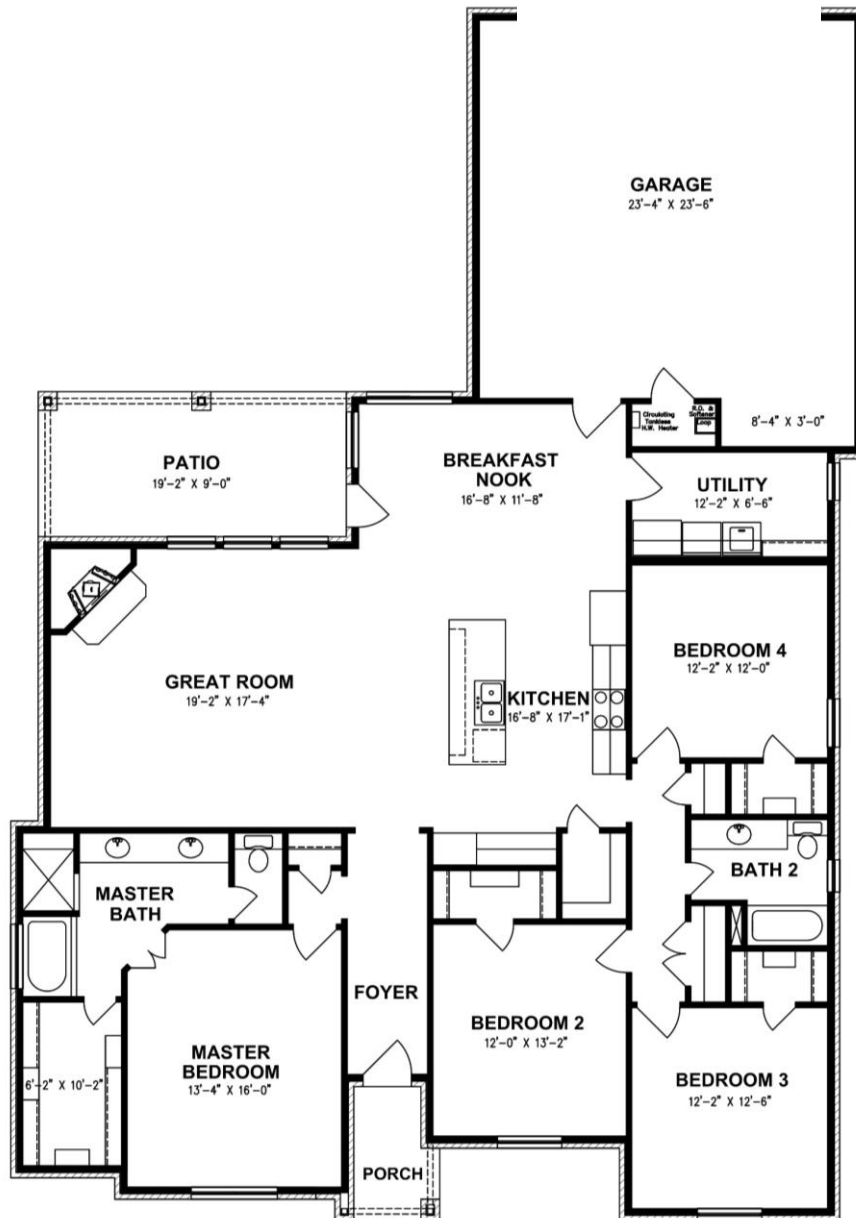
Estimated Price: \$453,500



Mark Payne

SMART DESIGN • BUILT FOR LIFE

Homes

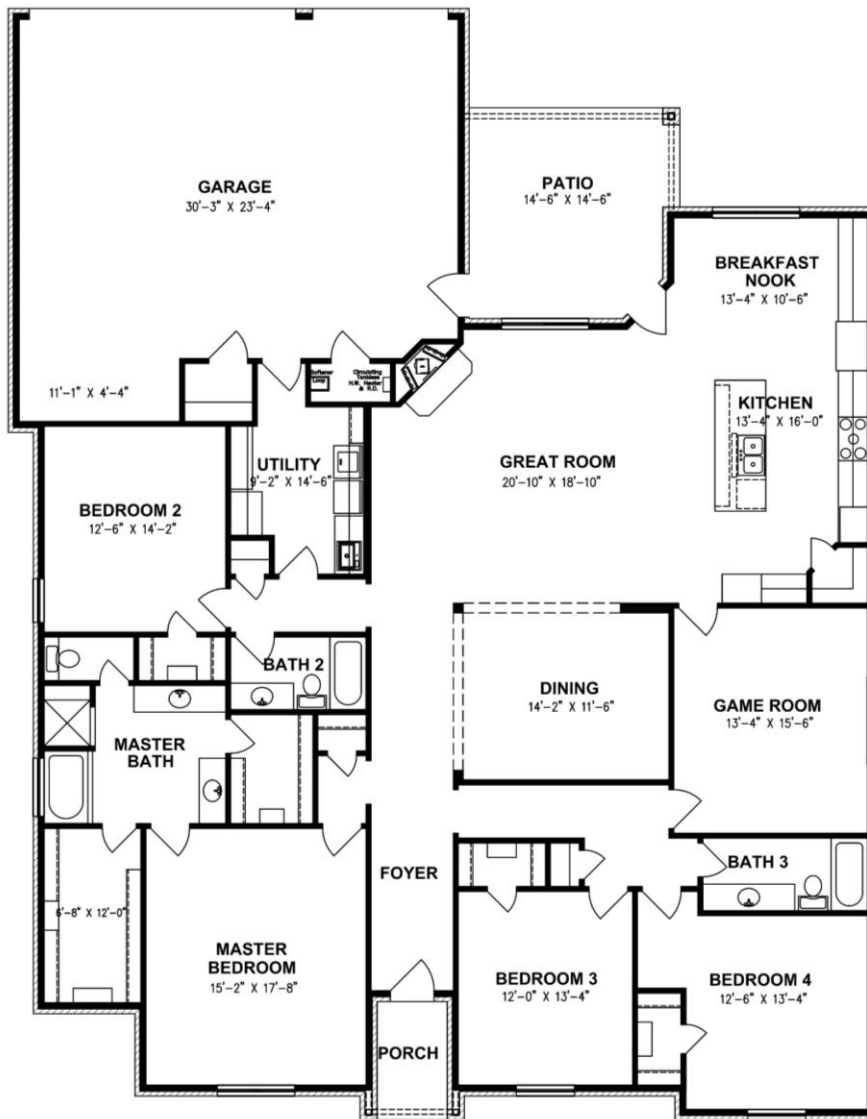


4412 Bosque Dr.

2,257 SQ. FT.

The Bristol

Estimated Price: \$487,500



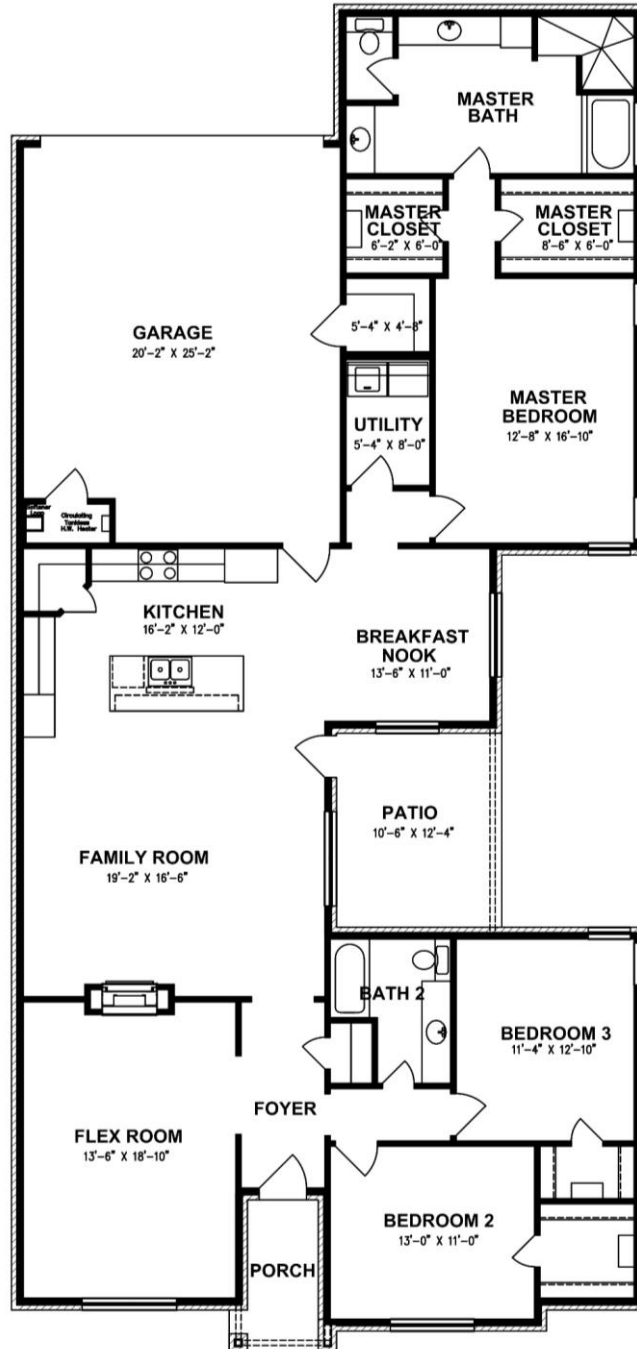
4500 Palo Pinto Ct.
 3,023 SQ. FT.
 The Stafford
 Estimated Price: \$615,500



4502 Palo Pinto Ct.
 2,958 SQ. FT.
 The Sheffield
 Estimated Price: \$591,500



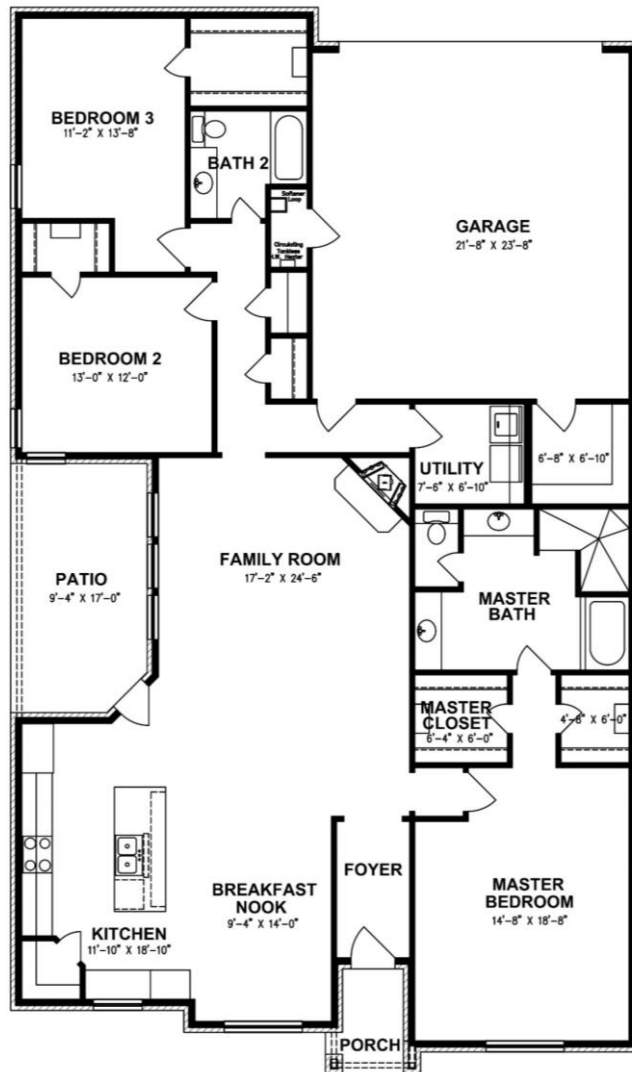
Mark Payne
SMART DESIGN • BUILT FOR LIFE
Homes



1317 Porterfield Rd.
2,249 SQ. FT.
The Boston Modified
Estimated Price: \$479,500



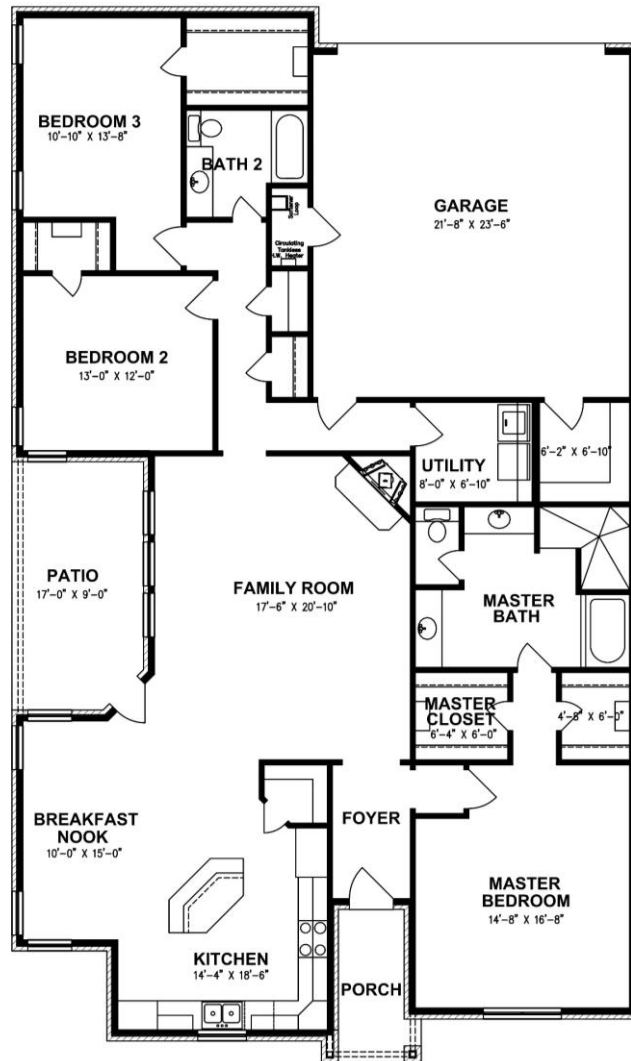
Mark Payne
SMART DESIGN • BUILT FOR LIFE
Homes



1314 Porterfield Rd.
2,174 SQ. FT.
The Savannah
Estimated Price: \$458,500



Mark Payne
SMART DESIGN • BUILT FOR LIFE
Homes



1312 Porterfield Rd.
2,128 SQ. FT.
The Charleston
Estimated Price: \$453,500